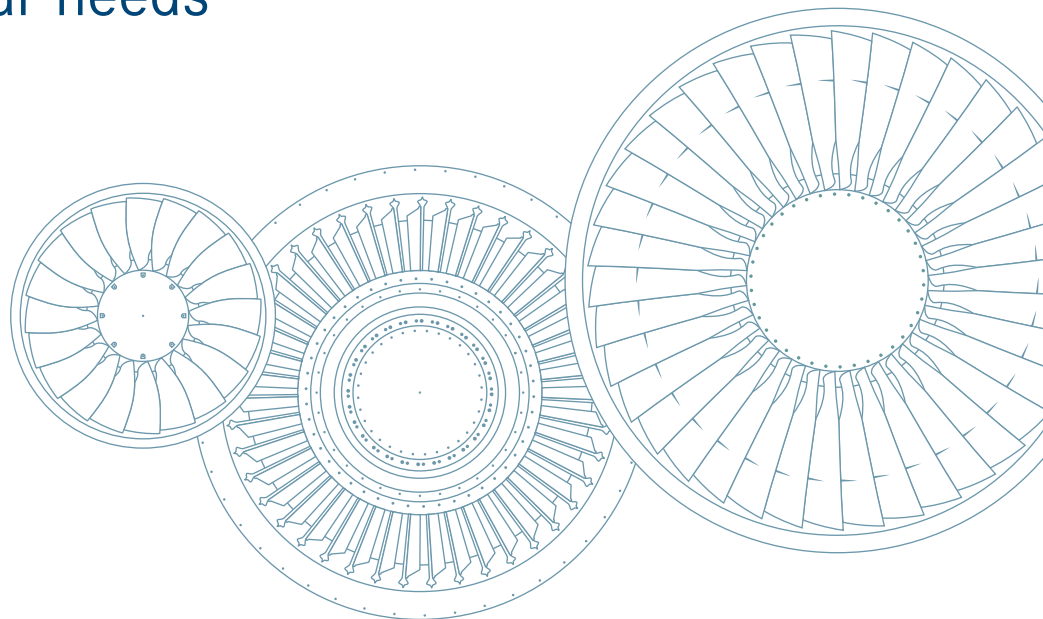




The testing package  
that meets your needs



## The testing package that meets your needs

Being a brand of MTU Aero Engines, MTU Aero Solutions can draw on nearly 100 years of aircraft engine background. MTU is Germany's leading engine manufacturer and ranks among the global players in the industry.

Our sophisticated validation and testing methods have won us a prominent role in the certification and approval of all types of applications. That special competency makes us your partner of choice. Our validation and testing methods cover all requirements also in instrumentation, metrology and safety electronics areas.

Whatever your particular challenges may be: we are your partner.

### MTU's range of testing

#### Engine testing

- Test planning (instrumentation, test procedure)
- Testing, development & certification (sea level, high altitude, flight)
- Standardization and certification engineering
- Development hardware procurement & module/engine assembly

#### Rig testing

- Test planning (instrumentation, test procedure)
- Testing of compressors, turbines and combustors
- Design of rigs
- Hardware procurement & assembly

#### Component testing

- High-/low-cycle fatigue (vibration, shaker test, spin pit)
- Static/dynamic load/virtual static test
- Design & assembly of test setups
- Special tests (impact testing, bullet shot)

#### Instrumentation

- Probes and rakes
- Blade and vane instrumentation (static and rotating)
- Pressure (incl. kulites) and temperature sensors, strain gages
- Free jet probes and massflow calibration
- High-temperature applications

#### Measurement systems

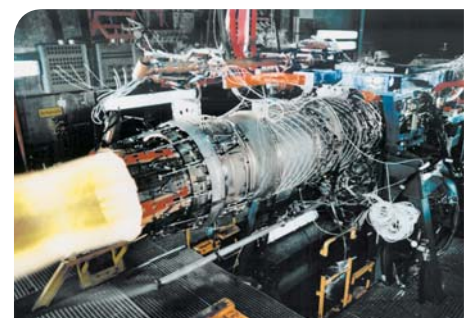
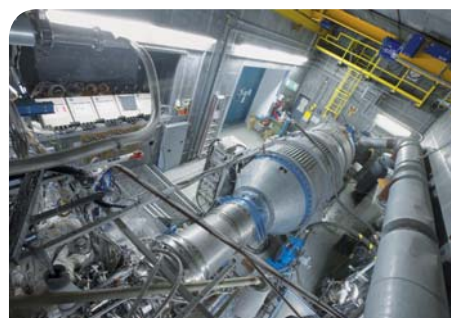
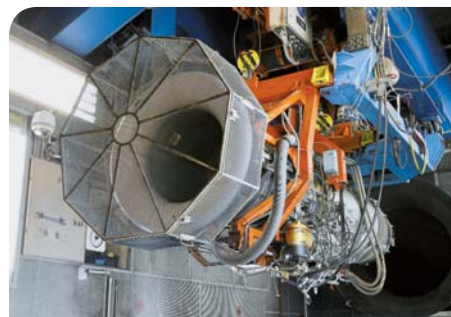
- Data acquisition and facility control systems
- Special measurement technology (aerodynamics, thermal & mechanical behaviour)
- Telemetry systems
- Support and calibration
- High-speed
- Tip timing
- Tip clearance
- Thermography

#### Test plant services

- Test plant design (engines, components)
- Upgrades of test plants
- Design and optimization of special test equipment
- Test control and data acquisition systems
- Service (calibration, maintenance, configuration)

#### Safety-critical electronics

- Controls and monitoring-system-related equipment



MTU Aero Engines GmbH  
Dachauer Straße 665  
80995 Munich • Germany  
Tel. +49 89 1489-0  
Fax +49 89 1489-5500  
E-mail [karin.wolf@mtu.de](mailto:karin.wolf@mtu.de)  
[www.mtu-aero-solutions.com](http://www.mtu-aero-solutions.com)