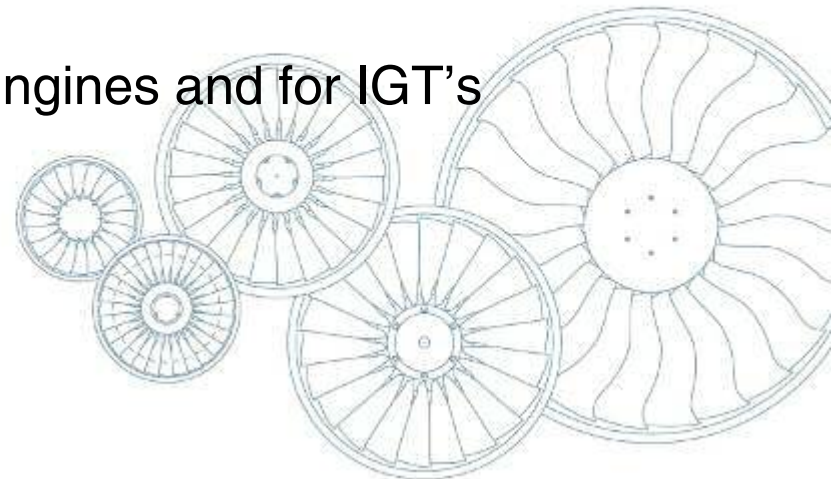




MTU Aero Engines State of the Art Technology for Aero Engines and for IGT's

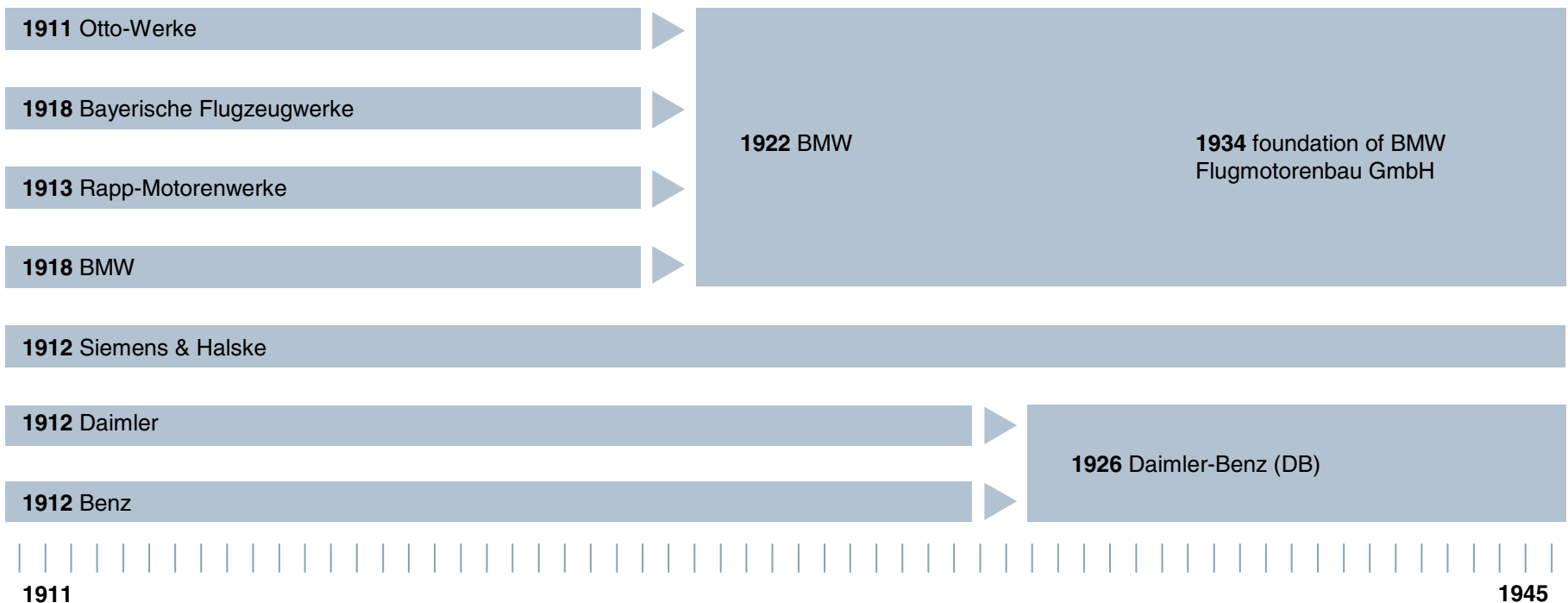
Dr. Christian Friedrich



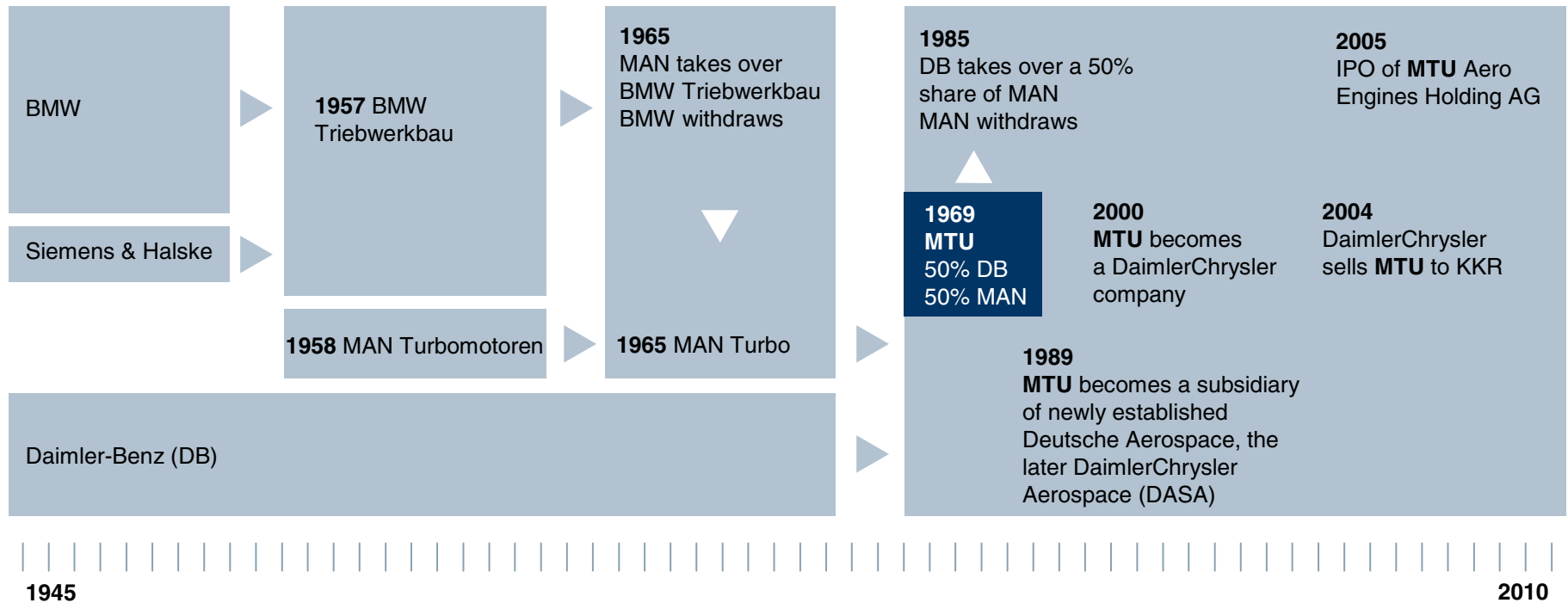
Agenda

- The company
- Business fields
- IGT business at MTU

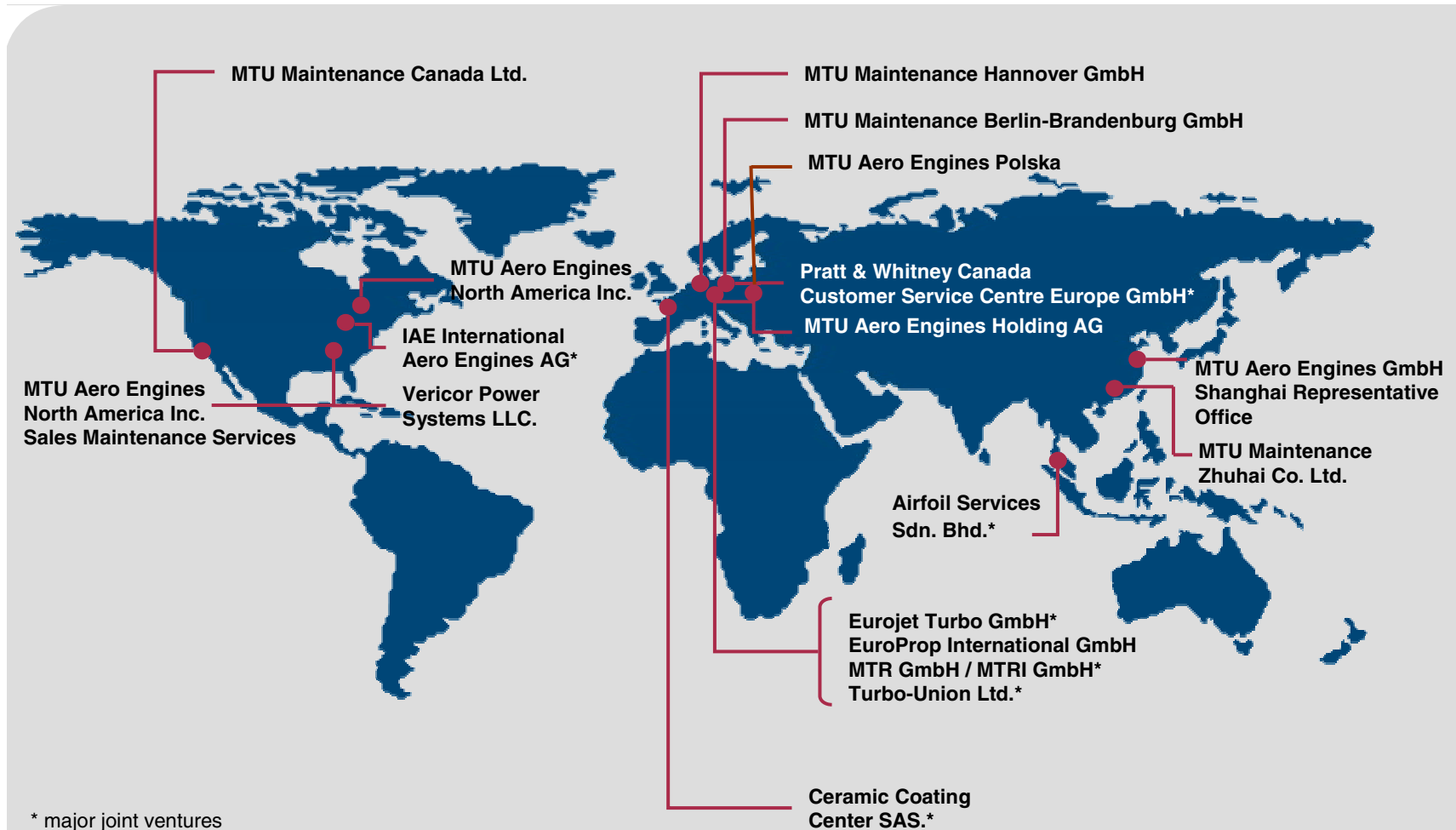
MTU – the history from 1911 to 1945



MTU – the history from 1945 to today



MTU Aero Engines worldwide



Guidance 2010 confirmed

(in m€)	FY 2009	Guidance 2010	
Revenues	2,611	~2,750	✓
EBIT adj.	292	~310	✓
EBIT adj. margin	11.2%	stable	✓
Free cash flow	120	~120	✓
Net income	141	stable	✓










Reflects new exchange rate assumption of 1.30 \$/€

MTU is built on three pillars

OEM business		MRO business
Commercial OEM	Military OEM & MRO	Commercial MRO
<ul style="list-style-type: none"> • Well-balanced portfolio • RRSP with all major OEMs including GE's successful LM-Series • Complete thrust range covered; 30% of active fleet with MTU participation • OEM for IGT's up to 4 MW (Vericor) and Engineering support for major IGT OEMs 	<ul style="list-style-type: none"> • Capability to develop and manufacture entire engines • Participation in key European and US military programs with systems design responsibility • Well established partner for military marine propulsion systems 	<ul style="list-style-type: none"> • World's largest independent engine MRO provider • Integrated repair solutions • Global network • CoE for LM Series IGT aftermarket services



Portfolio civil OEM business

PW4000 Growth	GP7000	GE _{nx}	CF6	PW2000	V2500
					
Boeing 777	Airbus A380	Boeing 787 Dreamliner Boeing 747-8	Airbus A300, A310, A330, Boeing 747, 767, MD-11	Boeing 757, Boeing C-17, (milit.: F117)	Airbus A319, A320, A321, Boeing MD-90
PW6000	JT8D-200	PW1000G	PW800	PW300	PW500
					
Airbus A318	Boeing MD-80-Series	Mitsubishi Regional Jet (MRJ), Bombardier CSeries	Cessna Citation Columbus	Learjet 60, Do328JET, Gulfstream G200, Hawker 1000, Dassault Falcon 7X, Cessna Sovereign	Cessna Bravo, Cessna XLS

Portfolio military OEM business

F414 / F404



F/A-18 Hornet

EJ200



Eurofighter Typhoon

RB199



Panavia Tornado

J79



F4-Phantom II

Larzac04



Alpha Jet

TP400-D6



Airbus A400M

Tyne



Transall
Breguet Atlantic

GE38



Sikorsky CH53-K

T64



Sikorsky CH53-G

MTR390



Eurocopter Tiger

250-C20



PAH-1

MTU Maintenance engine portfolio

Large commercial engines

CF6-50/-80C2



CFM56-3/-5B/-7



PW2000/PW6000



V2500-A1/-D5/-A5



GE90-110B/-115B GP7000



Small gas turbines

PT6A



PW200



PW300



PW500



CF34-1/-3/-8/-10E



IGT & marine

LM2500 (+)



ASE-series



LM5000



TF-series

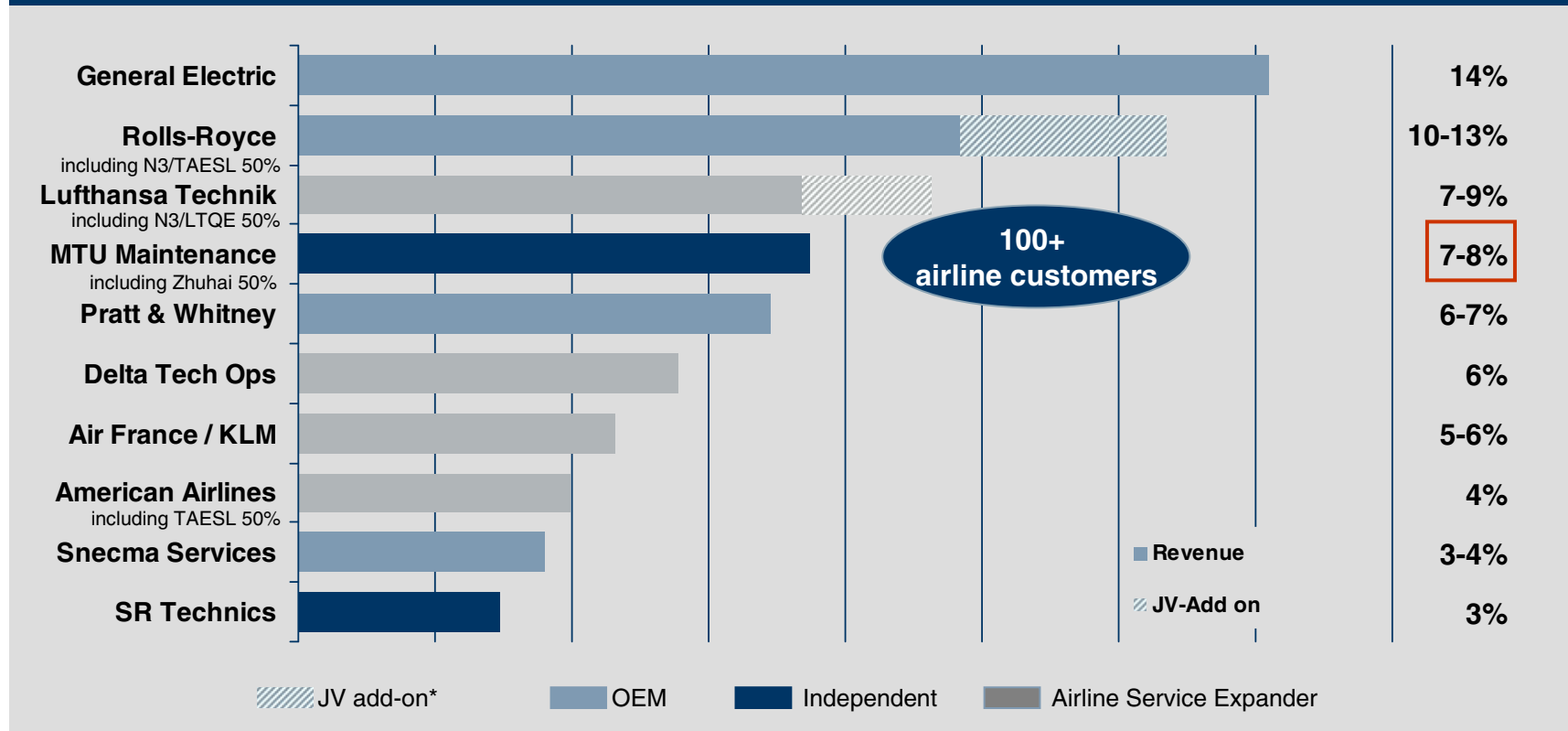


LM6000



Leading player with scale in commercial engine MRO

Market shares 2009 (based on estimated revenues)



* Minority-JVs added up to 100%

Source: AeroStrategy Forecast Initiative 2009; MTU Maintenance Actuals 2009

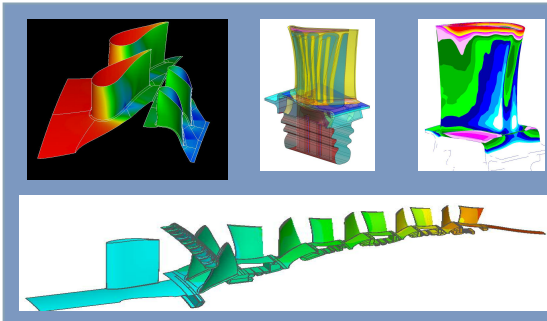
MTU-Highlights

- Germany's leading supplier and global player of aero engine sub-systems and modules
- Largest independent commercial aero engine MRO provider globally
- Largest independent MRO shop for the LM series IGT
- Balanced mix of high growth new engine programs, growing spare parts and MRO business
- Large program shares on key commercial and military programs
- High barriers to entry through technological leadership
- OEM of IGTs up to 4 MW for the US, Korean, Japanese and Swedish navies and for industrial applications around the world
- Partner to the German Armed Forces
- Conservative capitalization with significant equity commitment

MTU's presence in IGT is based on three pillars

MTU's IGT business is split into three units:

R&D and RRSP business	IGT - OEM	Aftermarket
<ul style="list-style-type: none"> • MTU-Aero Engines holds major RRSP shares in GE's successful LM series and manufactures parts • MTU is providing advanced technology solutions and supports OEM's within research, design, testing and manufacturing of industrial compressors and IGT's 	<ul style="list-style-type: none"> • Vericor Power Systems is well established with turn key systems for <ul style="list-style-type: none"> • Marine propulsion (mil. and civil) • Industrial power generation • Industrial mechanical drive • Complete aftermarket services to all customers world-wide (Field support, O&M, Training, ILS) 	<ul style="list-style-type: none"> • MTU-Maintenance is the largest independent MRO shop for the LM series with: <ul style="list-style-type: none"> • Excellence in on-site services • Capable shop services • MTU in-house and proprietary repairs • World-class testing

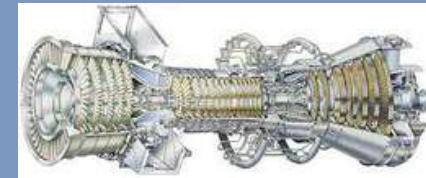


MTU Aero Engines not only engaged in Aero Engines but also supports the IGT business

MTU's proven aero engine design and technology helps to improve IGTs

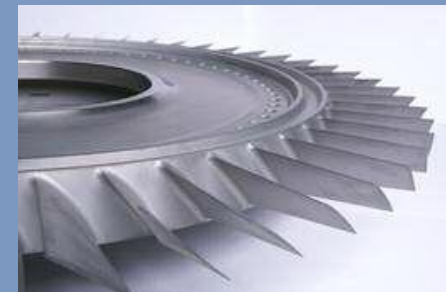
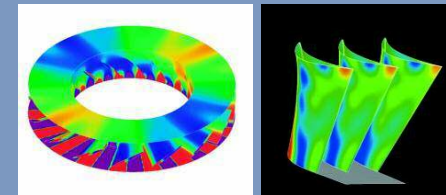
A strong partner in IGT Programs:

- RRSP in the successful GE-Series IGT's with design and manufacturing responsibility



MTU a service provider fitting the customers needs

- MTU is providing advanced technology solutions
- MTU is working on future technological leading multi-fuel PG solutions with strong advantages in future ecological technologies (e.g. CCS-technologies)
- The customer benefits through the entire supply chain from MTU's long term proven experience, expertise and reliability. Main industrial customers are among others GE, Alstom, MAN etc.
- We help heavy industry OEMs to improve the product-design (e.g. compressors or turbines) by implementing proven Aero Engine technology for generating best value to the customer and the partnership



Vericor Power Systems LLC. provides turn key solutions to its customers for marine propulsion, power gen. and mech. drive

Company facts at a glance

Shareholder	100% affiliate of MTU Aero Engines
Founded	1999, based in Atlanta (Georgia, USA)
Core competency	Manufacturing, marketing & support of gas turbines for naval (TF series) and industrial applications (ASE series)
Installed engines ^{1/2}	516/510 (marine/industrial)
Projects	Commercial TF engines: Pershing 115, WallyPower 118, M/Y Nobody
Top customers	US Navy, Japanese Navy, Korean Navy, South Oil Co. (Iraq)



Main Products

Type	MW	Marine	Industrial
ASE8	0.6		VPS1
ASE40	3.3	TF40/80	VPS3
ASE50	3.8	TF50/100	VPS4
ETF40B	4	Upgrade	Navy

¹ per 31.12.2009; ² Support/Aftersales activities

Vericor Power Systems Key Capabilities

Key facts at a glance

Design and manufacturing of Marine and Industrial Gas Turbines

- TF Series Marine Engines
- ASE Series Industrial Engines

Delivery of complete systems

- Marine propulsion systems
- Industrial power generation
- Industrial mechanical drive

Complete aftermarket services to all customers world-wide

- Field support
- O&M
- Training
- ILS

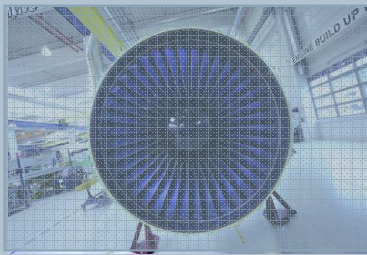


Independent IGT aftermarket services offered by MTU Maintenance

Aftermarket services incl. Maintenance, Repair & Overhaul

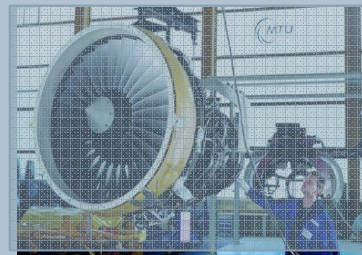
Large commercial engine MRO

- V2500
- CFM56-3/-5B/-7
- CF6-50/-80C2
- PW2000/PW6000
- GE90-110B/-115B
- GP7000



Small aero engine MRO

- CF34-3/-8/-10E
- PW 200/300/500
- PT6A



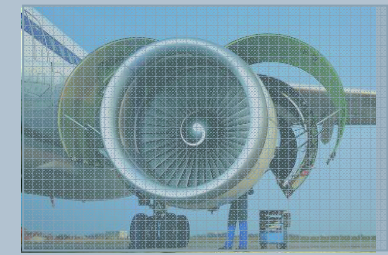
Industrial gas turbine MRO (GE & Vericor)

- LM2500/2500+
- LM5000
- LM6000
- ASE Series¹
- TF Series¹



Supporting services

- AOG/on-wing services
- Spare engines
- LRU management
- etc.



Full IGT overhaul and repair capability with strong synergies from Aero Engine Business

IGT Maintenance business has 70 active customers² worldwide

¹ Vericor Power Systems ² Active customers generating revenues in 2009 and/or sending workload

MTU Maintenance Key Capabilities for IGT's

Key facts at a glance

Worldwide local presence

- local field reps and field service mechanics
- additional Level II shops (including tooling) in USA and Thailand (will open in May 2011)

Extend Service Portfolio incl. Level IV Service e.g.

- Hot section refurbishment / re-placements
- Overhaul/ Repair of gas generators and power turbines
- Customized work scopes
- Engineering support

IGT-Testing

- Testing under real load conditions (mechanical shaft load)
- Continuous expansion of test capabilities (e.g. LM2500+G4 and LM6000 PF)





Thank you!

